

**Series 8, Built-in compact oven with microwave function, 60 x 45 cm, Black CMG778NB1**



**Included accessories**

1 x enamel baking tray  
1 x combination grid  
1 x universal pan

**Optional accessories**

HEZ531010 : Baking tray, non-stick ceramic coated  
HEZ631070 : Baking tray, anthracite enamelled  
HEZ634000 : Baking and roasting grid (standard)  
HEZ636000 : Glass pan  
HEZ660060 : Strip  
HEZ915003 : Glass roasting dish, 5,4 L

**The built-in microwave oven with Digital Control Ring and TFT-touchdisplay. Assist function for meals: automatically prepares your dishes, PerfectRoast Plus, PerfectBake Plus, Home Connect for control via the App.**

- **Digital Control Ring:** the simple and innovative way to select oven settings.
- **TFT Touch Display Pro:** perfect control thanks to an innovative Digital Control Ring and full-surface TFT touchscreen.
- **4D hotair:** even heat distribution for perfect results.
- **Hotair Gentle:** saves energy while baking and roasting.
- **Microwave Boost Function:** quick and easy warming.

**Technical Data**

Type of micro-wave oven : MW-Combi  
Type of control : Electronic  
Color / Material Front : Black  
Dimensions : 455 x 594 x 548 mm  
Cavity dimensions : 237.0 x 480 x 392.0 mm  
Length of electrical supply cord : 150 cm  
Net weight : 34.3 kg  
Gross weight : 37.6 kg  
EAN code : 4242005326051  
Maximum micro-wave power : 900 W  
Connection rating : 3600 W  
Fuse protection : 16 A  
Voltage : 220-240 V  
Frequency : 60; 50 Hz  
Plug type : Gardy plug w/ earthing  
Cavity dimensions : 237.0 x 480 x 392.0 mm  
Included accessories : 1 x enamel baking tray, 1 x combination grid, 1 x universal pan



4 242005 326051

## **Series 8, Built-in compact oven with microwave function, 60 x 45 cm, Black CMG778NB1**

**The built-in microwave oven with Digital Control Ring and TFT-touchdisplay. Assist function for meals: automatically prepares your dishes, PerfectRoast Plus, PerfectBake Plus, Home Connect for control via the App.**

### **Features**

- Compact oven with microwave with 22 heating methods: 4D Hotair, conventional top and bottom heat, Hotair grilling, full width variable grill, half width grill, pizza function, bottom heat, intensive heat, low temperature cooking, defrost, plate warming, dehydrate, keep warm, Hotair gentle, Conventional heat gentle, Microwave, 4D Hot air, Conventional heat, Full width grill, Half width grill, Hot air grilling
- Max. Power: 900 W; 5 Microwave power settings (90 W, 180 W, 360 W, 600 W, boost) with Inverter (MW)
- Intelligent microwave inverter technology: For optimised results maximum output power will be regulated to 600 W when used in longer operation for gentler cooking.
- Temperature range 30 °C - 275 °C
- Cavity volume: 45 litre capacity

### **Level independent telescopic rails**

- 3 shelf positions
- 1 level telescopic shelf, pyrolytic proof

### **Design**

- Touch controls
- Digital Control Ring
- Cavity inner surface: enamel anthracite

### **Cleaning**

- Pyrolytic self-cleaning function
- hydrolyse program

### **Programmes/functions**

- Oven Assistant with Voice Control
- BE63
- Electronic clock timer
- Digital temperature display with proposal  
Actual temperature display Heating-up indicator Temperature probe
- Drop down door, SoftClose, SoftOpen
- BoschAssist
- yes
- yes
- Fast pre-heating function
- LED light, Light on/off when oven door opened/closed
- Integral cooling fan
- Home Connect ready

### **Accessories**

- 1 x enamel baking tray, 1 x combination grid, 1 x universal pan

### **Features**

- Maximum window temperature 30° C
- Quadruple glazed door with heat reflective glass glazed CoolTouch door
- Electronic door lock  
Control panel lock Automatic safety switch off Residual heat indicator Start button Door contact switch

### **Technical information**

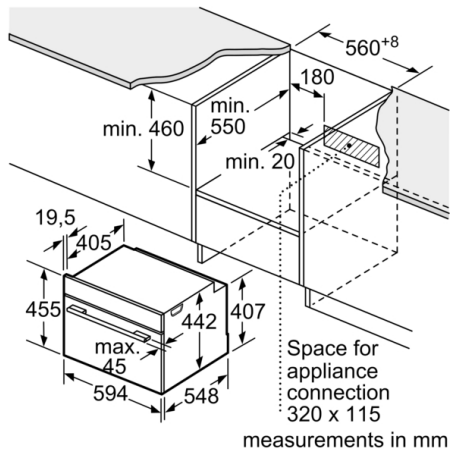
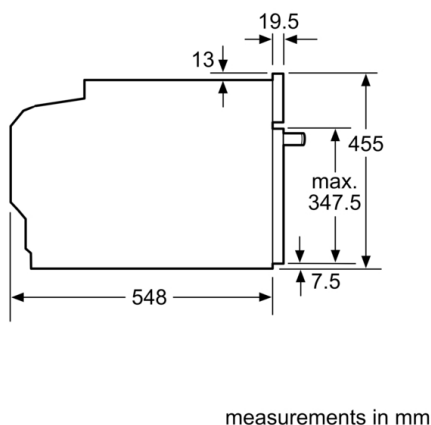
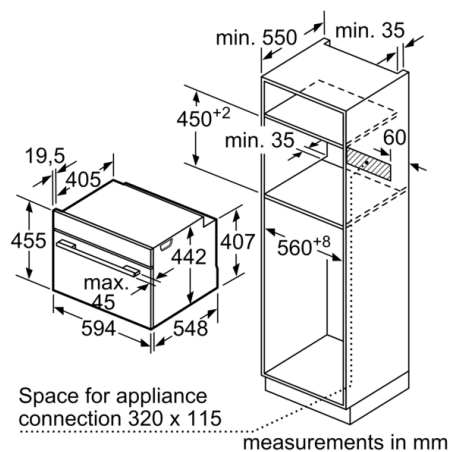
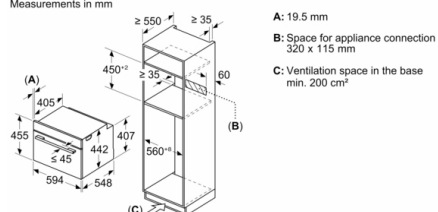
- Power cord length 150 cm Cable length
- Nominal voltage: 220 - 240 V
- Total connected load electric: 3.6 KW

### **Performance/technical information**

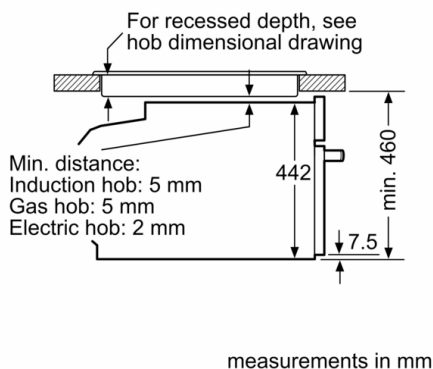
- Appliance dimension (hxwx d): 455 mm x 594 mm x 548 mm
- Niche dimension (hxwx d): 450 mm - 455 mm x 560 mm - 568 mm x 550 mm
- Please refer to the dimensions provided in the installation manual

## Series 8, Built-in compact oven with microwave function, 60 x 45 cm, Black CMG778NB1

Measurements in mm



Installation with a hob.



If the compact appliance will be installed underneath a hob, the following worktop thicknesses (including substructure if necessary) must be taken into account.

Hob type	min. worktop thickness	
	fitted	flush
Induction hob	42 mm	43 mm
Full surface Induction hob	52 mm	53 mm
Gas hob	32 mm	43 mm
Electric hob	32 mm	35 mm